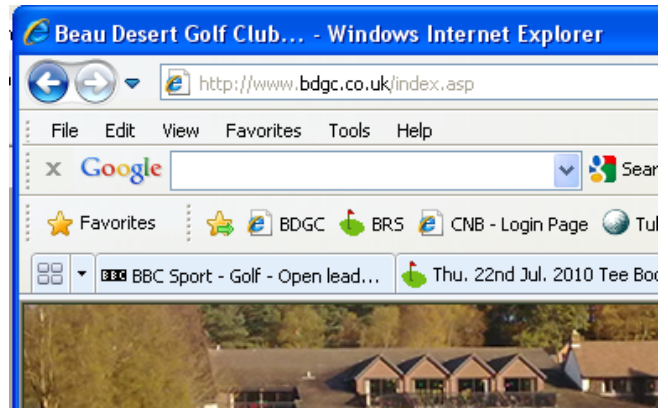
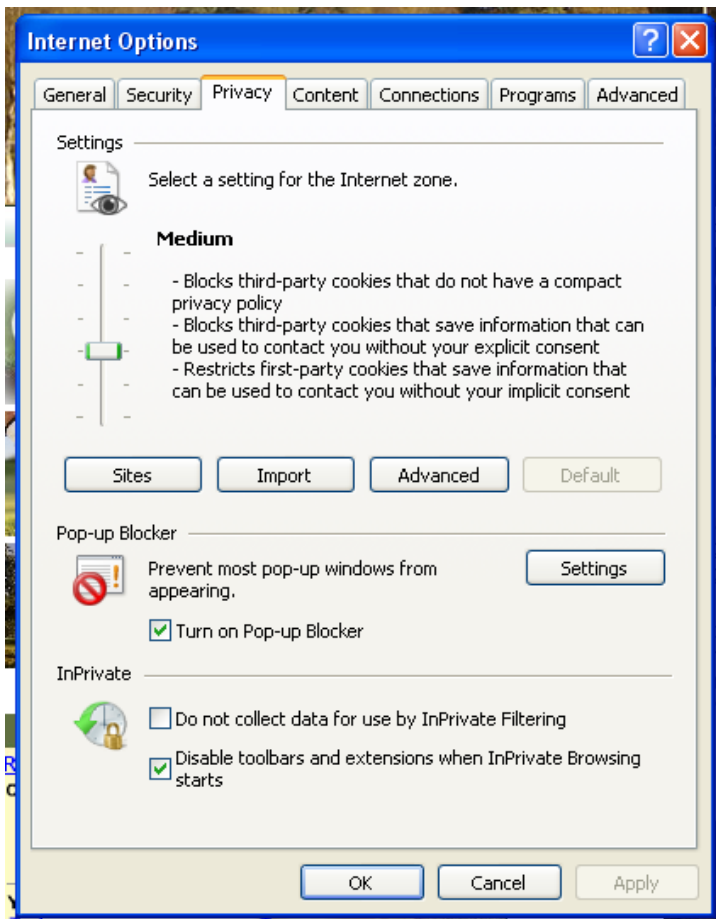
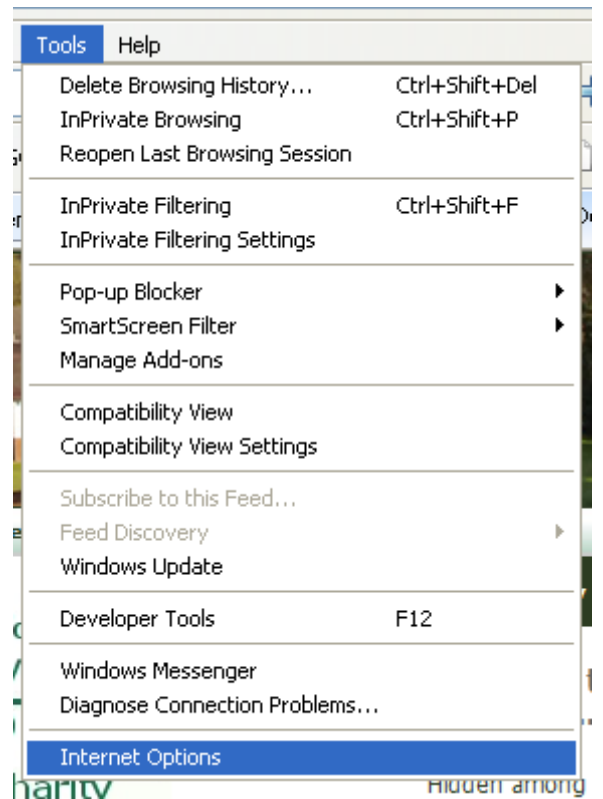


Allowing Cookies / Registering www.mastersscoreboard.co.uk as a safe site.

Step 1 - Open your web browser and look for the Tools link on the menu bar near the top of the page.

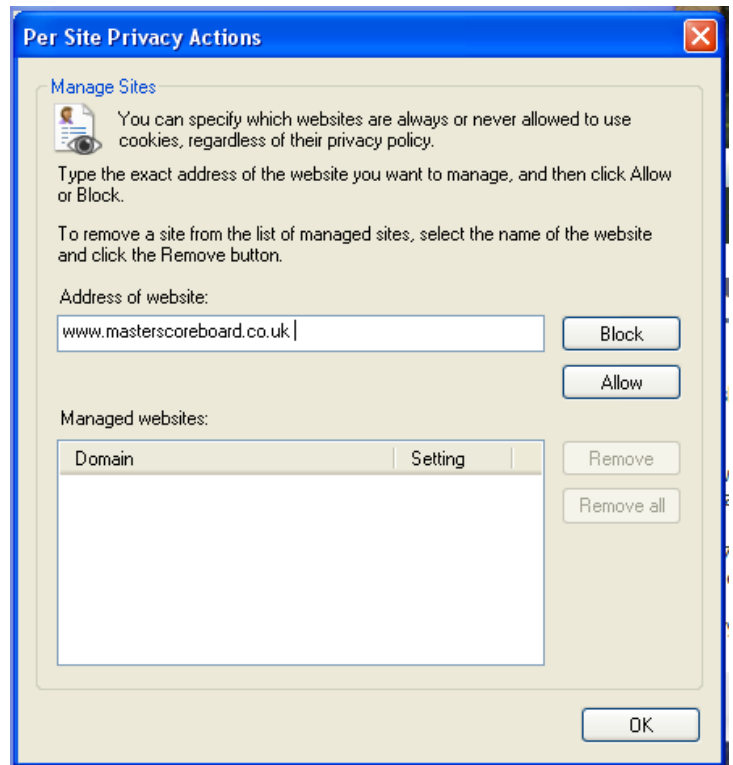


Step 2 - Click on Tools and select Internet Options at the bottom of the drop down menu



Step 3 - Select the Privacy Tab and then click on sites.

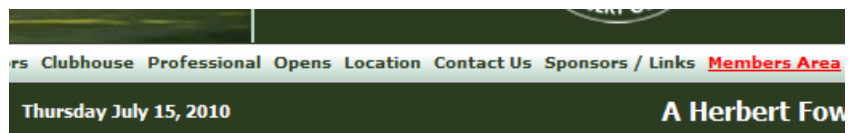
Step 4 - In the 'Address of Website' box – enter the name of the Masterscoreboard site – www.masterscoreboard.co.uk and then click allow



Step 5 - This will add the website to the Managed Websites box. When you have done this click OK and OK again to return to the browser window.

Step 6 - I would recommend rebooting the computer at this stage.

Step 7 - When the computer has rebooted go to the Club website and enter the Members Area



Step 8 - Select one of the handicap links at the bottom of the page

Step 9 - You will be prompted for a password which is **hazelslade**. After entering the password you will then be able to enter your own personal password.

Step 10 - Call me if there are any problems

Members Area

Whats happening on the Course - for a view of the next 28 days activity on the course [si](#)

Reciprocals - Beau is delighted to announce that arrangements with Aberdovey and Prestbu arranged. For full details simply click on the name of the Club below or for a map, [click here...](#)

Abbeydale Golf Club (Fowler Assoc)	Fairhaven Golf Club	Sherwood For
Aberdovey Golf Club (Fowler Assoc)	Llanymynech Golf Club	St Anne's Old
Bull Bay Golf Club (Fowler Assoc)	Notts Golf Club	The Wilmslow
Conwy Golf Club	Sandiway Golf Club	NEW
Vale of Llangollen Golf Club	Prestbury Golf Club	Delamere For

Sherwood Forest is a 'free exchange' and members interested in visiting this great course sho Club directly - Gary Mason: (01623) 626689.

Handicap Master Log-In
Handicap List
Forthcoming Competitions
Recent Competition Results
Eclectic Results
Order of Merit Results
Knockout Competitions
Exceptional Scoring Reports

To access any of these areas simply click on the name of the are password protected and you will need to contact the

When you have registered with the area you can set your

My Golf